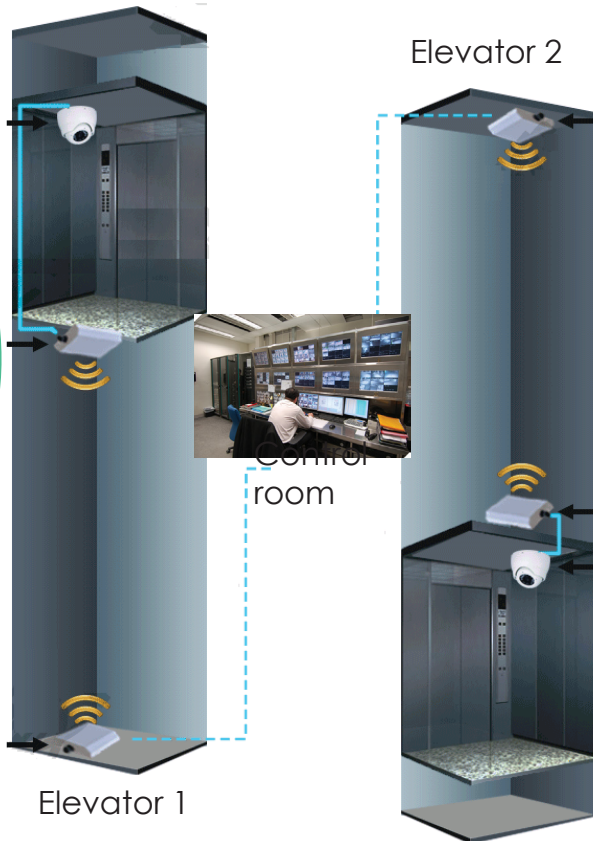


# High-Rise Elevator Cam

## Wireless Transmitted Solution

Our New wireless transmitted solution provide the almost easiest way to install the surveillance cam in the elevator car at the Skyscraper building in the future.

It has fast transmit signal which faster than the high-speed elevator facility (65-80km/h). And it breakthrough the skyscraper's elevators which can not equip the surveillance cam inside the carriage.



### Features:

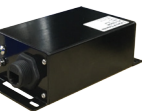
1. The wireless device can transmit the video signal, it can up to the 1500 meters(1.5km)
2. The video signal in well transmitted in the speed 65~ 80 km/h moving object.
3. The wireless device can transmit main video stream in 5.0 Mbps (5,000 kbps); and the sub video stream in 1.0 Mps (1,000 kbps)
4. The solution has the full kits package, easy to install and set for an engineer.
5. The package contain the TX antenna x1, RX antenna x1, 1x TX/ RX modules, NVR x1, Full HD 1080P IPCam x1.

### Technical Spec.

SNC2416	
High Gain	14 -dBi
Low VSWR	≤1.5
V/ H Bandwidth	27°/ 27°
Max. power-W	100
Dimension(cm)	51.5(L)x6(W)x14.5(H)
Rated wind velocity(m/S)	60

2.4GHZ WiFi Booster	
Compliant with IEEE802.11b/g/n, IEEE802.3/U	
150Mbps PHY data rate	
20/ 40 MHz (optional) Band width	
Ethernet	One 10/100 Mbps port
Transmitted Power	FCC:22 dBm/ CE:14dBm
Power	5V/ 550mA

2400BKD12	
High Gain	12 -dBi
Bandwidth	100
V/ H Bandwidth	35°/ 35°
Frequency MHz	2400~ 2500
Rated wind velocity(m/S)	60



僑全科技股份有限公司 197@197197.net

tel: 03-3165986  
fax: 03-3165882

桃園市經國路859號  
9F-2

www.onlylife.com